

# 2750 ULTRA CENTRECAB

## SERIOUS OFFSHORE AGGRESSIVE BEAST

The 2750 Ultra Centrecab evolved from our popular walk-around platform with the addition of a lean-forward 'Ultra' windscreen that provides excellent visibility from inside the vast cabin space. Cast and fish from 360° of access to every usable space. It's an adventurer's dream vessel. Smooth riding, very stable and dry, excellent fuel capacity, this big rig is the perfect option for extended trips or overnights.

Length Metric (feet): 8.4m (27.5ft)

Max Persons: 9

Maximum HP: 500hp

Leg Length: Twin 25"

Fuel Tank: 500L (132gal)

External Beam: 2.54m (100") (2.5m AUS)

Internal Beam: 2.04m (80")

Deadrise: 21.5°

Tube Thickness: 4mm (5/32")

Hull Thickness: 6mm (15/64")

Total Sealed Volume (approx): 2909L (768gal)

Dry Hull Weight (approx): 1990kg (4387lbs)

Length on Trailer: 10.2m (33'6")

Boat Height (approx): 2.72m (8'9")



**STABICRAFT**<sup>®</sup>

ADVENTURE WITH CONFIDENCE.

# 2750 ULTRA CENTRE CAB

## STANDARD FEATURES

LED Navigation Lights  
 Starboard Rear 2 Step Boarding Ladder with Alloy Boarding Rail  
 Red/White Dome Cabin Lights x2  
 Twin LED Cabin Lights  
 6 Way Dash Switch Panels x 2  
 Radar Tower  
 Cabin Lining  
 Twin Windscreen Wiper & Windscreen Washer Kit  
 Full V-Berth Squab with Extensions & Centre Infill Vinyl Squabs  
 Starboard Cabin Sliding Window  
 Portside Cabin Sliding Window  
 Roof with Fanned Double Row of Rod-holders (11) and Internal Roof Handrail x1  
 Aerial with Splitter  
 Maxwell Bonnet Hatch  
 Dash & Shelf  
 Cabin Rear Wall Drop Curtain  
 Fusion Apollo 770 Head Unit & 4 Fusion Speakers  
 SeaStar Steering - Hydraulic  
 Soft Touch Gussi Steering Wheel  
 Port PWC Spica Pearl Cabin Troop Fold Down Seat (2) with Stabicraft® Squab x 2 (no Galley)  
 Starboard PWC Spica Pearl Cabin Troop Fold Down Seat (2) with Stabicraft® Squab x 2  
 Elite Bolser Seating  
 Airwave Seat Bases  
 Bluesea Battery Dual Switch  
 Twin Bilge Pump Johnson Ultima 1250GPH  
 Trim Tab Mounts  
 Gamechaser™ Transom  
 Game Transom Box with 4 Rod-holders & LBT  
 Trimount Transom (25" Twin, 30" Single)  
 4mm Tread Plate Floor (with EPA fuel tank lid)  
 Underfloor 500L EPA Fuel Tank  
 Cockpit Wet Underfloor Storage with Thru Hull Drainage Bung  
 Provision for Airmar Through Hull Transducers with Gimble Adjustment Port & Stb  
 Towing Eye  
 Hull Planing Strakes  
 SARCA Aluminium Fairlead Fitted  
 Stabi® Cleats x 6  
 Wash Down Pump Kit with Hose & Gun  
 Two Electric Reel Clip Posts In Cockpit Coamings  
 Walkaround external drainage  
 Walkaround Lights  
 Maxwell TASMAN 8 Drum Winch with Rope, Chain & SS Swivel  
 Bow Rails  
 PWC Spica Pearl Vertical (3) Rod-holder Travel Storage x 2  
 6 SS Rod-holders + 6 Multi-holders Fitted  
 Wing Style Coamings  
 OCTI for Coamings Fitted (with Rod & Multiholders)  
 Gloss Paint - Belting up  
 Stabicraft® Graphics Package  
 Coamings Fendering + Extrusion Fendering Installed  
 PWC Cabin in Spica Pearl  
 PWC Interior Components in Spica Pearl  
 PWC Dash & Shelf in Spica Pearl  
 Gloss Paint - Roof

## OPTIONS

### CABIN/ CONSOLE

Rear Wall with Bi Fold Door  
 Maxwell Roof Hatch  
 Electric Toilet with Holding Tank, Roll Holder and Privacy Curtain  
 Porta Potti with Roll Holder and Privacy Curtain  
 Planar Diesel Heater 4kW with CO Sensor (if selected port side troop seats are not fitted)  
 Cabin Galley Unit with Wallas Diesel Stove/Heater & Sink with Water Tank  
 Planar Diesel Heater 4kW & 90L Icey-Tek with 2 Squabs

### SEATING

Split Lid 90L Icey-Tek with 2 Squabs (Remove Cabin Troop Seats)

### TRANSOM

Lenco Trim Tabs 4x12 (Auto Retract & LED Indicators)  
 Starboard Rear 3 Step Boarding Ladder with Alloy Boarding Rail  
 Portside 20" Auxiliary Bracket Weld On  
 Port Rear 2 Step Boarding Ladder with Alloy Boarding Rail  
 Port Rear 3 Step Boarding Ladder with Alloy Boarding Rail  
 Starboard 20" Auxiliary Bracket Weld On  
 Fish Box Transom  
 Tuna Tubes to Game Transom  
 Zipwake KB300-S 300mm Auto Trim Control System Installed  
 Zipwake KB300-S PRO 300mm Auto Trim Control System Installed

### HULL & FLOOR

U-Dek Flooring & Coamings with Stabicraft® Logo & Measure  
 Closed Cell Baffling  
 Keel Wear Strip  
 Weld on Boat Catch Block Above Towing Eye

### COAMINGS

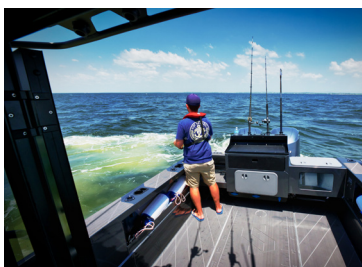
Sarca #3 Anchor  
 Electric Trolling Motor Mount Portside (Suits Ulterra 72")  
 External Coaming Handrails

### PAINT

Stage 1 - Belting Up Metallic  
 Stage 2 - Belting Up & External Pontoons Gloss  
 Stage 2 - Belting Up & External Pontoons Metallic  
 Stage 3 - Full, Inc Transom & Int Pontoons Gloss  
 Stage 3 - Full, Inc Transom & Int Pontoons Metallic  
 Bow Rails Painted - Black  
 Handrail Paint Package - Black

**IMPORTANT NOTE:** Specifications, features and images of boats displayed on this brochure may be updated at any time, at Stabicraft's sole discretion. For the most accurate and up-to-date information about a particular boat, please contact an authorised Stabicraft dealer.

\*NOTE: Some images show optional extras.



[www.stabicraft.com](http://www.stabicraft.com)

345 Bluff Highway, Invercargill, New Zealand

Phone: 0064 3 211 1828

Email: [enquiries@stabicraft.com](mailto:enquiries@stabicraft.com)

