

# 232 CENTER CONSOLE PERFORMANCE BULLETIN

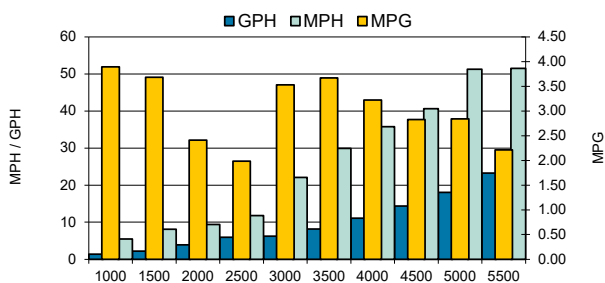


**Motors:** Single Yamaha F300 XSB2

PERFORMANCE			
RPM	MPH	GPH	MPG
1000	5.45	1.4	3.89
1500	8.10	2.2	3.68
2000	9.40	3.9	2.41
2500	11.80	5.95	1.98
3000	22.05	6.25	3.53
<b>3500</b>	<b>29.9</b>	<b>8.15</b>	<b>3.67</b>
4000	35.75	11.1	3.22
4500	40.60	14.35	2.83
5000	51.25	18.05	2.84
5500	51.50	23.25	2.22
6000	56.70	27.2	2.08

ACCELERATION	
TOP SPEED (MPH @ RPM)	56.7 @ 6000
ACCELERATION 0-20MPH (SECONDS)	4.62
ACCELERATION 0-30MPH (SECONDS)	6.76
OPTIMUM CRUISING RANGE (Miles @ RPM) with 10% Fuel Reserve	356 @ 3500 RPM
BEST FUEL ECONOMY (MPG @ RPM)	3.67 @ 3500

TEST CONDITIONS	
NUMBER OF PEOPLE	2
AIR TEMP (FARENHIGHT)	58
ELEVATION (FT. ABOVE SEA LEVEL)	121
WIND VELOCITY (MPH)	5
SEA STATE	CALM
FRESH/SALT WATER	FRESH



MANUFACTURER INFO	
NAME:	Sailfish Boats
STREET:	2501 Industrial Park Drive
CITY, STATE, ZIP:	Cairo, GA 39828
PHONE:	229-377-2125
FAX:	229-377-1855
WEBSITE:	www.sailfishboats.com

BOAT DETAILS	
BOAT MODEL	232CC
LENGTH	23' 0"
BEAM	8' 6"
WEIGHT AS TESTED	4900 LBS
MAXIMUM HP	300 HP
FUEL CAPACITY	108 GAL

ENGINE DETAILS	
ENGINE MODEL/S	YAMAHA F300 XSB2
HORSEPOWER	300 HP
DISPLACEMENT	4.2L
WEIGHT	562 LBS
LENGTH	25"
GEAR RATIO	1.75:1

ENGINE MOUNTING HEIGHT	
MOUNTING HOLE POSITION	4

PROPELLER/S	
SERIES	SWS II HP
PROPELLER MATERIAL	Polished Stainless Steel
NUMBER OF BLADES	3
PITCH	18"P

**COMMENTS**  
BOAT EQUIPPED WITH HALF TANK OF FUEL, TWO PERSONS, MISC. SAFETY AND TEST GEAR (APPROX 100 LBS)

**Notice to Consumer:** The information and data contained in this Performance Bulletin is approximate and subject to many different factors and variables. It is provided as a guideline only and should not be relied upon as representative of actual performance. Your boat's performance may be different than the information contained in this Performance Bulletin due to various factors including your boat's actual weight, wind and water conditions, temperature, humidity, elevation, bottom paint, boat options affecting wind/water drag and/or boat weight, and operator ability. Please confirm the specifications and performance data on your specific boat/engine combination with your dealer prior to purchase. Seminole Marine Inc. reserves the right to change the specifications and performance data of this Performance Bulletin or engine without notice.



SF10182024Z



www.sailfishboats.com