

236 DUAL CONSOLE PERFORMANCE BULLETIN

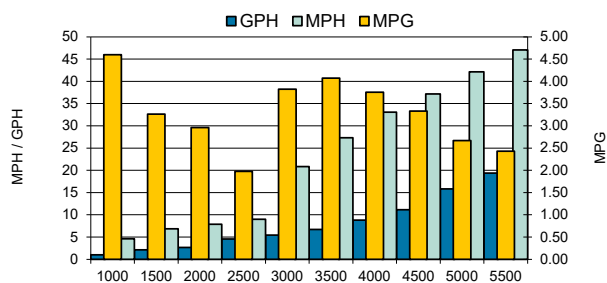


Motors: Single Suzuki DF250APXW5

PERFORMANCE			
RPM	MPH	GPH	MPG
1000	4.60	1	4.60
1500	6.85	2.1	3.26
2000	7.85	2.65	2.96
2500	9.00	4.55	1.98
3000	20.85	5.45	3.83
3500	27.3	6.7	4.07
4000	33.05	8.8	3.76
4500	37.15	11.15	3.33
5000	42.15	15.8	2.67
5500	47.05	19.35	2.43
5850	50.10	22.1	2.27

ACCELERATION	
TOP SPEED (MPH @ RPM)	50.1 @ 5850
ACCELERATION 0-20MPH (SECONDS)	8.06
ACCELERATION 0-30MPH (SECONDS)	11.21
OPTIMUM CRUISING RANGE (Miles @ RPM) with 10% Fuel Reserve	395 @ 3500 RPM
BEST FUEL ECONOMY (MPG @ RPM)	4.07 @ 3500

TEST CONDITIONS	
NUMBER OF PEOPLE	3
AIR TEMP (FARENHIGHT)	87
ELEVATION (FT. ABOVE SEA LEVEL)	121
WIND VELOCITY (MPH)	0
SEA STATE	CALM
FRESH/SALT WATER	FRESH



MANUFACTURER INFO	
NAME:	Sailfish Boats
STREET:	2501 Industrial Park Drive
CITY, STATE, ZIP:	Cairo, GA 39828
PHONE:	229-377-2125
FAX:	229-377-1855
WEBSITE:	www.sailfishboats.com

BOAT DETAILS	
BOAT MODEL	236DC
LENGTH	23'0"
BEAM	8'6"
WEIGHT AS TESTED	5000 LBS
MAXIMUM HP	300 HP
FUEL CAPACITY	108 GAL

ENGINE DETAILS	
ENGINE MODEL/S	SUZUKI DF250APXW5
HORSEPOWER	250 HP
DISPLACEMENT	4.028 L
WEIGHT	639 LBS
LENGTH	25"
GEAR RATIO	2.08:1

ENGINE MOUNTING HEIGHT	
MOUNTING HOLE POSITION	3

PROPELLER/S	
SERIES	WATERGRIP
PROPELLER MATERIAL	Polished Stainless Steel
NUMBER OF BLADES	4
PITCH	20"P

COMMENTS	
BOAT EQUIPPED WITH HALF TANK OF FUEL, THREE PERSONS, MISC. SAFETY AND TEST GEAR (APPROX 100 LBS)	

Notice to Consumer: The information and data contained in this Performance Bulletin is approximate and subject to many different factors and variables. It is provided as a guideline only and should not be relied upon as representative of actual performance. Your boat's performance may be different than the information contained in this Performance Bulletin due to various factors including your boat's actual weight, wind and water conditions, temperature, humidity, elevation, bottom paint, boat options affecting wind/water drag and/or boat weight, and operator ability. Please confirm the specifications and performance data on your specific boat/engine combination with your dealer prior to purchase. Seminole Marine Inc. reserves the right to change the specifications and performance data of this Performance Bulletin or engine without notice.



SF07122024Z



www.sailfishboats.com