

245 DUAL CONSOLE PERFORMANCE BULLETIN

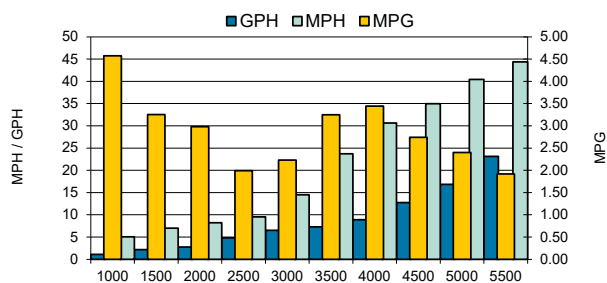


Motors: Single Suzuki DF300APXW5

PERFORMANCE			
RPM	MPH	GPH	MPG
1000	5.03	1.1	4.57
1500	6.99	2.15	3.25
2000	8.20	2.75	2.98
2500	9.55	4.8	1.99
3000	14.50	6.5	2.23
3500	23.70	7.3	3.25
4000	30.65	8.9	3.44
4500	34.95	12.75	2.74
5000	40.45	16.85	2.40
5500	44.40	23.15	1.92
6000	47.15	25.4	1.86

ACCELERATION	
TOP SPEED (MPH @ RPM)	47.15 @ 6000
ACCELERATION 0-20MPH (SECONDS)	8.27
ACCELERATION 0-30MPH (SECONDS)	11.83
OPTIMUM CRUISING RANGE (Miles @ RPM) with 10% Fuel Reserve	371 @ 4000 RPM
BEST FUEL ECONOMY (MPG @ RPM)	3.44 @ 4000

TEST CONDITIONS	
NUMBER OF PEOPLE	3
AIR TEMP (FARENHIGHT)	82
ELEVATION (FT. ABOVE SEA LEVEL)	121
WIND VELOCITY (MPH)	0
SEA STATE	CALM
FRESH/SALT WATER	FRESH



MANUFACTURER INFO	
NAME:	Sailfish Boats
STREET:	2501 Industrial Park Drive
CITY, STATE, ZIP:	Cairo, GA 39828
PHONE:	229-377-2125
FAX:	229-377-1855
WEBSITE:	www.sailfishboats.com

BOAT DETAILS	
BOAT MODEL	245DC
LENGTH	24'0"
BEAM	8'6"
WEIGHT AS TESTED	5300 LBS
MAXIMUM HP	300 HP
FUEL CAPACITY	120 GAL

ENGINE DETAILS	
ENGINE MODEL/S	SUZUKI DF300APXW5
HORSEPOWER	300 HP
DISPLACEMENT	4.028 L
WEIGHT	639 LBS
LENGTH	25"
GEAR RATIO	2.08:1

ENGINE MOUNTING HEIGHT	
MOUNTING HOLE POSITION	3

PROPELLER/S	
SERIES	WATERGRIP
PROPELLER MATERIAL	Polished Stainless Steel
NUMBER OF BLADES	3
PITCH	18.5"P

COMMENTS	
BOAT EQUIPPED WITH HALF TANK OF FUEL, THREE PERSONS, MISC. SAFETY AND TEST GEAR (APPROX 100 LBS)	

Notice to Consumer: The information and data contained in this Performance Bulletin is approximate and subject to many different factors and variables. It is provided as a guideline only and should not be relied upon as representative of actual performance. Your boat's performance may be different than the information contained in this Performance Bulletin due to various factors including your boat's actual weight, wind and water conditions, temperature, humidity, elevation, bottom paint, boat options affecting wind/water drag and/or boat weight, and operator ability. Please confirm the specifications and performance data on your specific boat/engine combination with your dealer prior to purchase. Seminole Marine Inc. reserves the right to change the specifications and performance data of this Performance Bulletin or engine without notice.



SF08272024Z



www.sailfishboats.com