

# 360 CENTER CONSOLE PERFORMANCE BULLETIN



## Motors: Triple Mercury 400HP 5.7L V10 Verado

PERFORMANCE			
RPM	MPH	GPH	MPG
600	3.8	3.3	1.2
1000	8.2	5.6	1.5
1500	10.9	9.6	1.1
2000	12.6	14.7	0.9
2500	17.7	16.0	1.1
3000	27.1	24.6	1.1
3500	34.0	31.1	1.1
4000	39.7	38.0	1.0
4500	44.6	51.3	0.9
5000	51.9	68.0	0.8
5500	55.8	83.8	0.1
6000	60.9	98.1	0.6

ACCELERATION	
TOP SPEED (MPH @ RPM)	61.7 @ 6125
ACCELERATION 0-20MPH (SECONDS)	4.08
ACCELERATION 0-30MPH (SECONDS)	6.14
BEST FUEL ECONOMY (MPG @ RPM)	1.2 @ 3500

TEST CONDITIONS	
BOAT WEIGHT AS TESTED (lbs)	17,000
NUMBER OF PEOPLE	2
AIR TEMP (FARENHHEIGHT)	90
ELEVATION (FT. ABOVE SEA LEVEL)	Sea Level
WIND VELOCITY (MPH)	0
SEA STATE	Calm
FRESH/SALT WATER	Fresh

MANUFACTURER INFO	
NAME:	Sailfish Boats
STREET:	2501 Industrial Park Drive
CITY, STATE, ZIP:	Cairo, GA 39828
PHONE:	229-377-2125
FAX:	229-377-1855
WEBSITE:	www.sailfishboats.com

BOAT DETAILS	
BOAT MODEL	360CC
LENGTH	36' 0"
BEAM	11' 2"
DRY BOAT WEIGHT	15,600
MAXIMUM HP	1,200
FUEL CAPACITY	400 gal
STEERING TYPE	Electric Steering

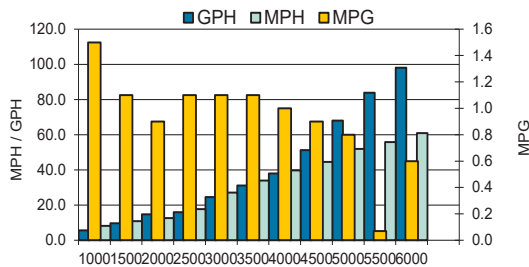
ENGINE DETAILS	
ENGINE MODEL/S	Triple 400HP 5.7L V10 Verado
CYLINDERS	10
HORSEPOWER	400
DRIVE OR GEAR MODEL AND RATIO	HD Camber 2.08
MOUNTING HOLE POSITION	4, 4, 4
ENGINE HEIGHT (in)	2.5,2.8,2.5
ENGINE SETBACK (in)	10.5,10.8,10.5
ENGINE LENGTH (in)	25,35,25

PROPELLER/S	
SERIES	Revolution X
PROPELLER MATERIAL	Polished Stainless Steel
NUMBER OF BLADES	4
PITCH	23.0,25.0,23.0

COMMENTS	
BOAT EQUIPPED WITH HARDTOP, 50 GAL OF FUEL, TWO PERSONS, MISC. SAFETY AND TEST GEAR (APPROX 100 LBS)	



**Notice to Consumer:** The information and data contained in this Performance Bulletin is approximate and subject to many different factors and variables. It is provided as a guideline only and should not be relied upon as representative of actual performance. Your boat's performance may be different than the information contained in this Performance Bulletin due to various factors including your boat's actual weight, wind and water conditions, temperature, humidity, elevation, bottom paint, boat options affecting wind/water drag and/or boat weight, and operator ability. Please confirm the specifications and performance data on your specific boat/engine combination with your dealer prior to purchase. Seminole Marine Inc. reserves the right to change the specifications and performance data of this Performance Bulletin or engine without notice.



SF04162019Z



www.sailfishboats.com