

276 DUAL CONSOLE PERFORMANCE BULLETIN

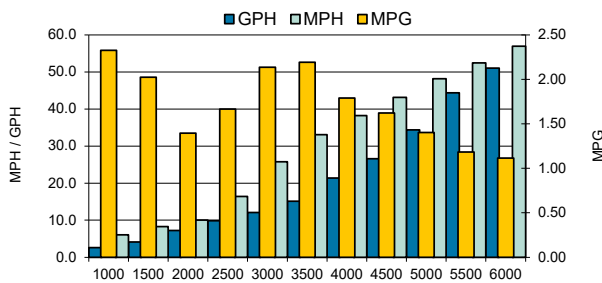


Motors: Twin Yamaha F250XSB2

PERFORMANCE			
RPM	MPH	GPH	MPG
1000	6.1	2.6	2.33
1500	8.3	4.1	2.02
2000	10.1	7.2	1.40
2500	16.4	9.9	1.66
3000	25.8	12.1	2.14
3500	33.1	15.1	2.19
4000	38.2	21.4	1.79
4500	43.2	26.6	1.62
5000	48.2	34.4	1.40
5500	52.5	44.4	1.18
6000	57.0	51.1	1.12

ACCELERATION	
TOP SPEED (MPH @ RPM)	57.0 @ 6000
ACCELERATION 0-20MPH (SECONDS)	4.74
ACCELERATION 0-30MPH (SECONDS)	6.67
OPTIMUM CRUISING RANGE (Miles @ RPM) with 10% Reserve	349 @ 3500 RPM
BEST FUEL ECONOMY (MPG @ RPM)	2.19 @ 3500

TEST CONDITIONS	
NUMBER OF PEOPLE	2
AIR TEMP (FAREHEIGHT)	55
ELEVATION (FT. ABOVE SEA LEVEL)	121
WIND VELOCITY (MPH)	0
SEA STATE	CALM
FRESH/SALT WATER	FRESH



Notice to Consumer: The information and data contained in this Performance Bulletin is approximate and subject to many different factors and variables. It is provided as a guideline only and should not be relied upon as representative of actual performance. Your boat's performance may be different than the information contained in this Performance Bulletin due to various factors including your boat's actual weight, wind and water conditions, temperature, humidity, elevation, bottom paint, boat options affecting wind/water drag and/or boat weight, and operator ability. Please confirm the specifications and performance data on your specific boat/engine combination with your dealer prior to purchase. Seminole Marine Inc. reserves the right to change the specifications and performance data of this Performance Bulletin or engine without notice.

MANUFACTURER INFO	
NAME:	Sailfish Boats
STREET:	2501 Industrial Park Drive
CITY, STATE, ZIP:	Cairo, GA 39828
PHONE:	229-377-2125
FAX:	229-377-1855
WEBSITE:	www.sailfishboats.com

BOAT DETAILS	
BOAT MODEL	276DC
LENGTH	27'0"
BEAM	9"
WEIGHT AS TESTED	7,800 LBS
MAXIMUM HP	500 HP
FUEL CAPACITY	177 GAL

ENGINE DETAILS	
ENGINE MODEL/S	YAMAHA F250 XSB2
HORSEPOWER	250 HP
DISPLACEMENT	4.2L
WEIGHT	562 LBS
LENGTH	25", 25"
GEAR RATIO	1.75:1

ENGINE MOUNTING HEIGHT	
MOUNTING HOLE POSITION	3

PROPELLER/S	
SERIES	SWS II
PROPELLER MATERIAL	Polished Stainless Steel
NUMBER OF BLADES	3
PITCH	19"P

COMMENTS	
BOAT EQUIPPED WITH HALF TANK OF FUEL, TWO PERSONS, MISC. SAFETY AND TEST GEAR (APPROX 100 LBS)	



SF02172025A



www.sailfishboats.com